

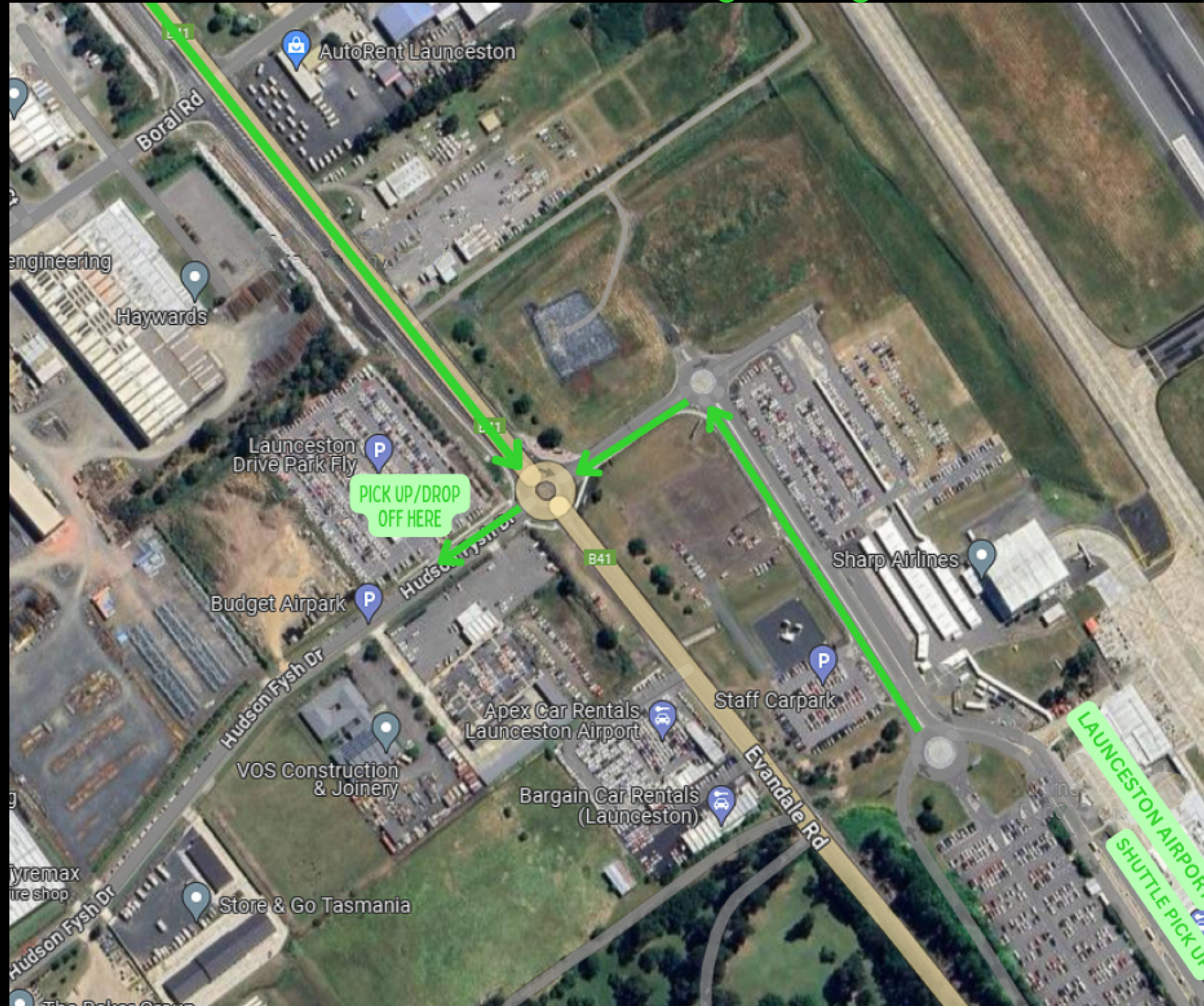
AUTORENT LAUNCESTON DEPOT

On Arrival: Renter is to call the number provided to be transferred from the airport to Launceston Drive Park Fly where the vehicle is located. If you are already in Launceston, simply head to Launceston Drive Park Fly to pick up your van.

On Return: Return to Launceston Drive Park Fly. Staff there will be able to take you to the airport.

After Hours: You will be supplied with after-hours instructions upon booking. Please note, an additional fee will apply for after-hours.

If you have any questions, please contact our staff by calling us on 1300 067 222.



PH | 1300 067 222

Email | campervans@autorent.com.au

Website | autorent.com.au